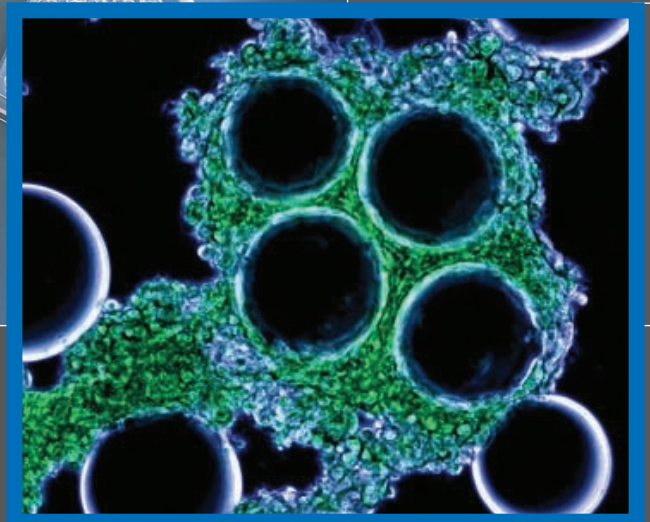


TCM 400

Inverted Microscopy



**LABOMED** 

ideas for vision

# Inverted Microscopy for Cell Culture & Bio-Sciences



1 Infinited corrected optics providing images with needle sharp contrast and definition. The extra long working distance objectives and super wide field eyepieces offer ease of operation.



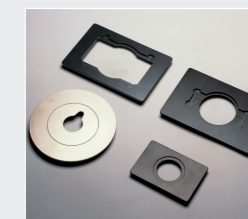
2 The microscope is designed for a wide range of research and bio-sciences applications. The observation and analysis of cell cultures and In Vitro Fertilization (IVF) studies are made easy through a wide range of accessories.

3 High precision & sophisticated micro manipulators and accessories provide utmost convenience during Intracytoplasmic Sperm Injection (ICSI) for the IVF process.

## TCM 400

The TCM400 is compact inverted research microscope with advanced performance features. Infinited corrected true color long working distance optical system. Low positioned, precision coaxial focusing mechanism with focus stop and tension adjustment.

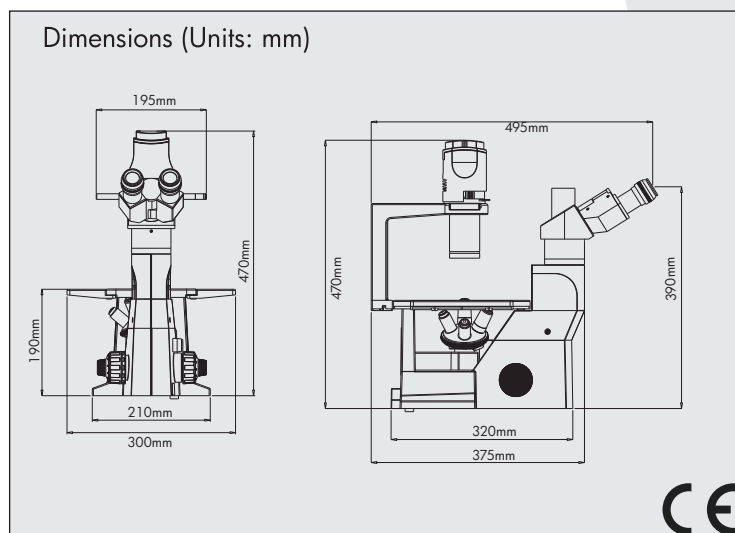
Teamed with accessories such as Phase Contrast, Fluorescence Technique System, Heated Stage and a wide variety of viewing bodies, the TCM 400 delivers high end performance at an unbelievable price.



# TCM 400 Inverted Microscope

Specifications

Item	Specifications
- Stand	Ergonomic design sturdy stand made of anti rust material
- Viewing Bodies	Siedentopf Binocular or Trinocular head, 30° inclined, Ergonomic tiltable 0°-25°, 360° rotatable, Inter pupillary distance 52 - 75mm
- Eyepiece	Focusable wide field eyepiece* 10x/22mm with foldable eye guard, anti fungal
- Nosepiece	Reverse angle quadruple nosepiece (Ball bearing type) with click stops and rubber grip
- Objectives	LW series infinity corrected, True colour, Long working distance DIN Phase Plan Achromatic objectives* 4x, 10x, 20x, anti fungus, (optional 40x objective), anti fungal
- Condenser	Long working distance, NA 0.30, suitable for Phase contrast/BF with Phase contrast slider. Detachable condenser lens for using high flasks.
- Focusing	Coaxial coarse and fine focusing system with auto focus stop and tension adjustment
- Illumination	Transmitted illumination system 6V-30W Halogen with intensity control. 110V-240V Universal Power Supply (UL-CE approved)
- Optional accessories	Mechanical Stage, Micromanuplators, Fluorescence attachment, Adapters for Video, Digital Still Camera, 35mm SLR Camera



## Configurations

Description	Configuration	Cat No.
Standard	Binocular	7125000
Standard	Trinocular	7125500
Standard	Ergonomic 0°-25°	7126000
<b>Fluorescence</b>		
Standard	Binocular	7127000
Standard	Trinocular	7128000

\* All optical components are made of environment friendly LEAD free optical glass.

## Labo America, Inc.

920 Auburn Court  
Fremont, CA 94538  
U.S.A.

Tel: (510) 445-1257  
Fax: (510) 991-9862  
Email: sales@laboamerica.com



ISO 9001: 2008  
File No. A9020

[laboamerica.com](http://laboamerica.com)

Distributor