

PRIMA OPH

OPHTHALMIC SURGERY



GIVING SURGEONS THE GIFT OF LIGHT

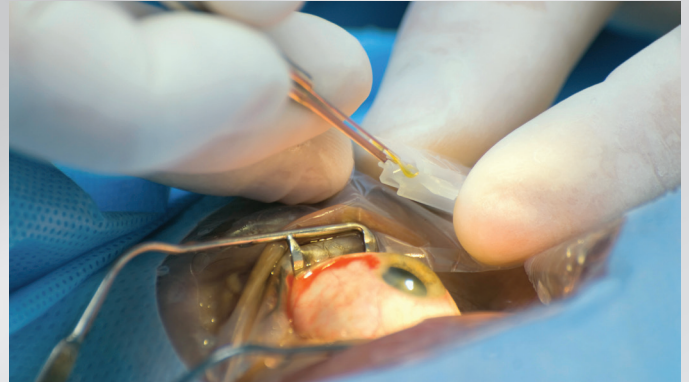


With increasing demands on ophthalmic surgeons to provide better and more affordable care, they must be empowered with instruments that perform with ultimate precision. The Prima OPH is the first in a new class of microscopes designed for doctors with a focus on better and more affordable eye care.

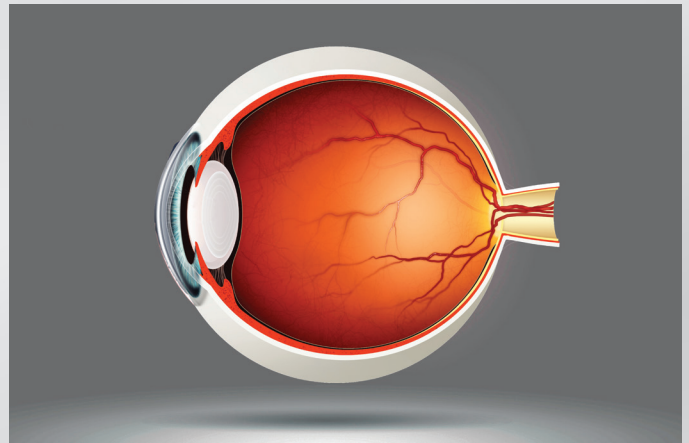
With LABOMED's proprietary *MaxLite™* coated optics, superb images with true-to-life rendition and glare-free view are guaranteed. A sturdy, balanced stand and a host of ergonomic design features deliver ultimate user convenience.

ULTRA BRIGHT LED + LONG-LASTING BULB = DELIGHT

1 Bright and even illumination coupled with apochromatic optics and an ergonomic stand makes the Prima OPH an ideal ophthalmic solution.



2 Red reflex is made possible in the Prima OPH thanks to an ingenious optical design enabling visualization of an illuminated retina for easy detection of ruptured vessels, arteries, and damage to the optic disc.

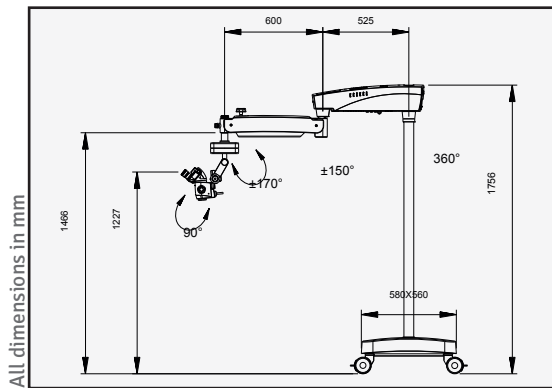


3 LABOMED developed the *ProLine* range of adapters for DSLRs and video cameras, enabling convenient digital documentation and live viewing. For assistant viewing, the LABOMED assistoscope is available with an ergonomic position and light-weight construction for a well-balanced system.



PRIMA OPH

Observation tubes	PRIMA OPH X-Y & Z AXIS Standard: Binocular 45° inclined head, Option: 0-210° Binocular tilatable head	PRIMA OPH Z AXIS Standard: Binocular 45° inclined head, Option: 0-210° Binocular tilatable head
Eyepieces	Standard: WF 10X/16 mm with eye guards & dioptre lock mechanism Option: WF 12.5X/16 mm with eye guards ± 5 mm	Standard: WF 10X/16 mm with eye guards & dioptre lock mechanism Option: WF 12.5X/16 mm with eye guards ± 5 mm
Dioptre Adjustment magnichanger	Apochromatic <i>MaxLite</i> coated, 5 steps: 0.4X, 0.6X, 1.0X, 1.6X, 2.5X	Apochromatic <i>MaxLite</i> coated, 5 steps: 0.4X, 0.6X, 1.0X, 1.6X, 2.5X
Objective	Standard: f-200 mm fixed type Option: f-175 mm fixed type	Standard: f-200 mm fixed type Option: f-175 mm fixed type
FOV	47.0 - 7.50 mm	47.0 - 7.50 mm
Magnification Range	3.40 to 21.25	3.40 to 21.25
Fine focus	Range 40 mm, motorized	Range 40 mm, motorized foot control
XY Travel	50 X 50 mm	NA
Light source	50W LED, 100-240V	50W LED, 100-240V
LUX	70 k	70 k
Maximum Wattage	200 Watts	200 Watts
Colour temperature	5700 k	5700 k
Red Reflex	Yes	Yes
Built-in filters	Green & Blue	Green & Blue
Vertical movement of arm	550 mm	550 mm
Microscope carriers	Multi-axial (XYZ) 6 function foot control	Single axis (Z) 2 function foot control
Optional accessories	Double beam splitter (straight) Double Iris attachment, Rotoplate, Assistant binocular attachment, <i>Proline</i> range of camera adapters	Double beam splitter (straight) Double Iris attachment, Rotoplate, Assistant binocular attachment, <i>Proline</i> range of camera adapters



All dimensions in mm

DESCRIPTION	CONFIGURATION	CATALOG NO.
Prima OPH	Basic, motorized fine focus	6136000
Prima OPH	Motorized fine focus and X-Y coupling	6135000



Labo America, Inc.
920 Auburn Court
Fremont, CA 94538

Tel: (510) 445-1257
Fax: (510) 445-1317
E-mail: sales@laboamerica.com

www.laboamerica.com



With a policy of continuous development, Labo America, Inc. reserves the right to change design and specifications without prior notice.



Distributor

SPECIFICATIONS

6135000-796 1.3 011019
© Labo America, Inc. All rights reserved.