

**GYNECOLOGY**



**LABOMED** 



BUDGET FAVORITE

PRIMA C

Illumination  
27W LED, 75.000 Lux

Vertical movement of arm  
100 mm



SUPER ALL-ROUNDER

PRIMA CS

Illumination  
27W LED, 75.000 Lux

Vertical movement of arm  
± 250 mm



SUPREME CHOICE

PRIMA GN

Illumination  
50W LED, 135.000 Lux

Vertical movement of arm  
500 mm



OVER-THE-SHOULDER

PRIMA swift

Illumination  
27W LED, 100.000 Lux

Vertical movement of arm  
550 mm

## BUDGET FAVORITE

Compact and versatile colposcope, high power LED, superb optics and ergonomic footprint.



**PRIMA C**  
Article code 6128000

## SUPER ALL-ROUNDER

Same meticulously designed optical system as the Prima C but connected to a suspension and swivel arm mounted on a stable base.

The arm can easily be mounted directly on an exam chair.



**PRIMA CS, 90° HEAD**

Article code 6128100-801



**PRIMA CS, 45° HEAD**

Article code 6128100-803

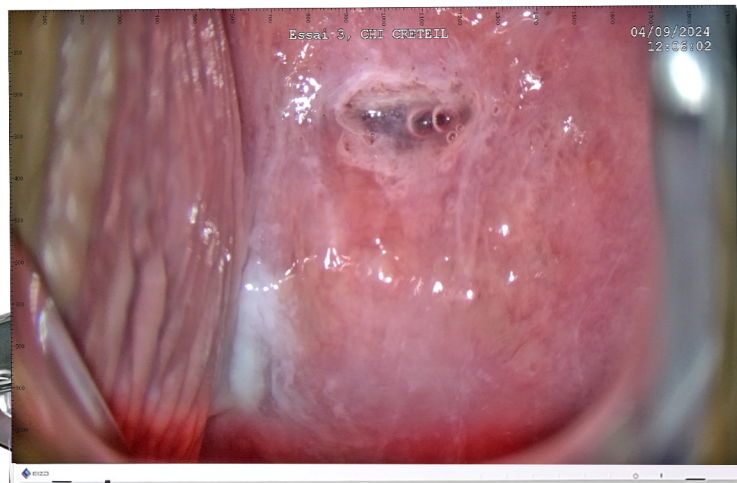


**PRIMA CS, ERGO HEAD**

Article code 6128100-805

CAMERA & FOOT SWITCH

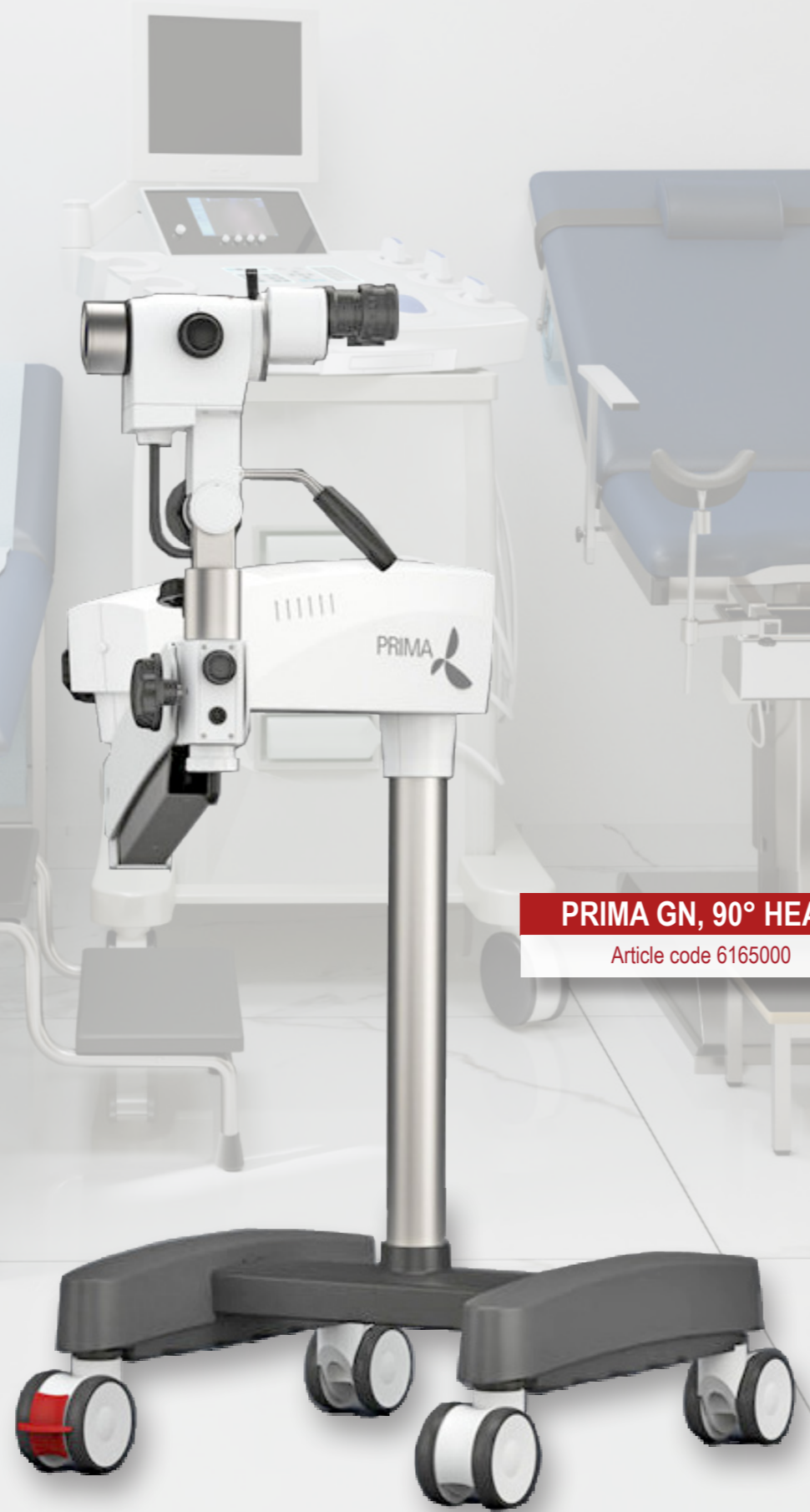
Easily upgradeable with a camera and foot switch, this microscope offers enhanced functionality for seamless hands-free operation and high quality image capture, ensuring precision and efficiency in every procedure.



**SUPREME CHOICE**

Prima GN is mounted on an H-shaped mobile stand with robust castor wheels, making it easy to transport the colposcope between rooms. The unit can also be directly mounted on an exam chair.

A powerful LED light source in combination with a superb optical system makes the Prima GN a valuable partner for diagnostic and surgical work.



**PRIMA GN, 90° HEAD**  
Article code 6165000

Labomed Prima GN microscope is also available in two other different versions: 45° head & Ergo head



**PRIMA GN, 45° HEAD**  
Article code 6165000-110



**PRIMA GN, ERGO HEAD**  
Article code 6165000-125

**OVER-THE-SHOULDER**

Tailored for precision in medical examinations, this microscope ensures optimal image clarity and fluid movement. Its stable design provides vibration-free viewing across all magnifications, allowing for accurate diagnostics.

Experience enhanced depth of field and contrast for detailed observations, making it an essential tool for specialists in the field.



**PRIMA swift**  
Article code 6182501

CMO 300, suitable for Prima C/CS and GN



**CMO 300**  
Article code 6133300-801

CMO 300, suitable for PRIMA swift



**CMO 300**  
Article code 6183300



Double beam Splitter, flat

Article code 6134150



Single Beam Splitter GN

Article code 6122501



Camera availability depends on stock, including top brands such as Panasonic, Sony and Canon.



If you cannot find what you're looking for, do not hesitate and ask us directly.



Documentation kit Prima, flat, kit incl. camera

Article code 6134156



Single Beam Splitter GN version with camera

Article code 6122522



Single Beam Splitter GN version with HDMI camera

Article code 6122525



Including foot switch

Single beam splitter 4K, GN, kit, 4K HDMI

Article code 6122536



Double handle for mounting on the magnichanger, GN

Article code 6128600-852

## GENERAL SPECIFICATIONS

Product name	PRIMA C	PRIMA CS	PRIMA GN	PRIMA swift
<b>Binocular tube</b> <i>Straight viewing tube 90°</i>	√	√	√	√
<b>Eyepiece</b> <i>WF 10X/18mm with foldable eye guards, Optional: 12.5X/18mm; fixed eye guards</i>	dioptr adjustment ± 5 mm	dioptr adjustment ± 5 mm	dioptr adjustment ± 5 mm	dioptr adjustment ± 7 mm
<b>Apochromatic magnichanger</b> <i>5 step &gt; 0.4X, 0.6X, 1.0X, 1.6X and 2.5X</i>	√	√	√	√
<b>Objective</b> <i>CMO 300, Manual fine focus</i>	√	√	√	√
<b>Illumination</b> <i>27W LED, 75,000 Lux</i>	√	√		
<b>Illumination</b> <i>27W LED, 100,000 Lux</i>				√
<b>Illumination</b> <i>50W LED, 135,000 Lux</i>			√	
<b>Position LED light source</b> <i>Built in head</i>	√	√		√
<b>Position LED light source</b> <i>In swivel arm</i>			√	
<b>Built in filters</b> <i>Green</i>	√	√		
<b>Built in filters</b> <i>Green &amp; yellow</i>			√	√
<b>Floor mount (*)</b> <i>Star base</i>	√			
<b>Floor mount (*)</b> <i>H-shape</i>		√	√	√

(\*) are included in the standard delivery; a variety of optional extras are available. Please inquire about the options.



All Labomed medical microscopes are treated with MaxLite™. A multi layered coating to guarantee a most efficient transmission of the image. With excellent anti-fog and anti-fungal properties.



**LABOMED**® 

Essebaan 50  
2908 LK Capelle aan den IJssel  
THE NETHERLANDS

+31 (0)10 45 842 22 | [info@labomedeuropa.com](mailto:info@labomedeuropa.com) | [www.labomedeuropa.com](http://www.labomedeuropa.com)